

SARAH LAWRENCE COLLEGE CAMPUS SAFETY SHUTTLE SCHEDULE



MONDAY-FRIDAY

CAMPUS SHUTTLE #1

Campus Loop & Hyatt (8:20am–4:00pm, 4:20pm–12:00am)

Approximate loop time: 20 minutes

- Hyatt Hotel at Cross County Mall
- Front side of Hill House (half-moon driveway on to Midland Ave.)
- Front of Campbell Sports Center (half-moon driveway)
- BWCC Circle
- Library main entrance (Andrews Lane)
- Science Center
- Heimbald Circle
- Return to front side of Hill House

CAMPUS SHUTTLE #2

Off-Campus Loop (8:20am–4:00pm, 4:20pm–12:00am)

Approximate loop time: 30 minutes

- BWCC Circle
- Bronxville train station (drop-off & pick-up)
- Hampton Inn
- BWCC Circle
- Hyatt Hotel at Cross County Mall
- BWCC Circle
- Bronxville train station

WEEKEND SERVICE (8:30am–12:00am)

Approximate loop time: 40 minutes

- Hyatt Hotel at Cross County Mall
- Front side of Hill House (half-moon driveway on to Midland Ave.)
- Front of Campbell Sports Center (half-moon driveway)
- BWCC Circle
- Library main entrance (Andrews Lane)
- Science Center
- Heimbald Circle
- Return to front side of Hill House
- BWCC Circle
- Bronxville train station
- Hampton Inn
- BWCC Circle

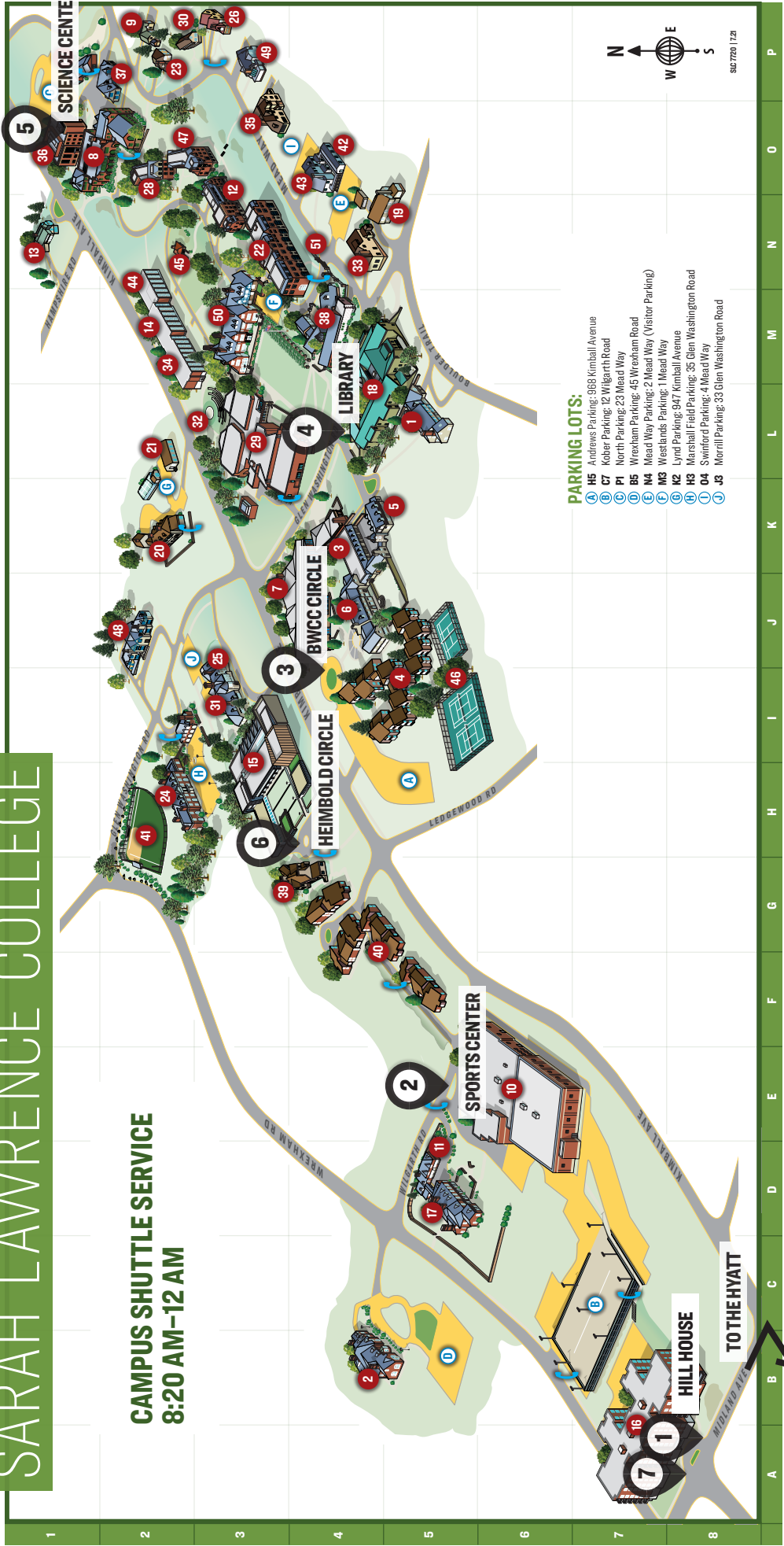
NOTES

- Shuttle service from both Hyatt and Hampton Inn can be accessed 7-days-a-week from 12:15am–2:30am by calling Campus Safety at Westlands Desk at 914-395-2209
- There are shuttle pick-up signs at all campus locations listed above.
- If you are at a shuttle pick-up location and have not seen a shuttle for the length of the loop, please call Campus Safety for an update at Westlands Desk at 914-395-2209

The Campus Emergency Hotline is 914-395-2222 or ext. 2222 from a campus phone.

SARAH LAWRENCE COLLEGE

CAMPUS SHUTTLE SERVICE
8:20 AM-12 AM



CAMPUS LOCATIONS:

- 1 L5 123 Boulder Trail
Child Development Institute
Early Childhood Center
- 2 B4 45 Wrexham
Human Genetics
- 3 K4 Andrews Annex
- 4 L5 Andrews Court
- 5 K5 Andrews East
- 6 J4 Andrews House
- 7 J4 Barbara Walters Campus Center
Dining Pavilion
The Green
- 8 O2 Bates Center for Student Life
Dining Hall
Post Office
Student Affairs

- 9 P2 Brebner House
- 10 E6 Campbell Sports Center
- 11 D5 Curtis
- 12 O3 Dudley Lawrence
- 13 N1 Faculty House 161 Hampshire
- 14 M2 Garrison
- 15 H3 Heimbald Visual Arts Center
Donnelly Theatre
Gallery
- 16 A7 Hill House
- 17 D5 Kober House
- 18 L5 Library
- 19 N5 Lyles House
Health and Wellness Center
- 20 K2 Lynd House

- 21 L2 Lynd Offices
- 22 H3 MacCracken
- 23 P2 Mansell House
- 24 H2 Marshall Field Music Building
Music Library
- 25 J3 Morrill House
- 26 P3 Morris House
- 27 P1 North
- 28 O2 OSilas
- 29 L3 Performing Arts Center
Camron Theatre
Reisinger Concert Hall
Wright Theatre
- 30 P3 Perkins House
- 31 I3 President's House

- 32 L3 Remy Theatre / North Lawn
- 33 N4 Robinson House
- 34 M2 Rothschild
- 35 O3 Schmidt House
- 36 O1 Science Center
- 37 P2 Sheffield
- 38 M4 Siegel Center
- 39 G3 Stonim
- 40 F4 Stonim Woods
- 41 H2 Softball Field
- 42 O4 Swinford Annex
- 43 O4 Swinford House
Global Education
- 44 N2 Taylor

- 45 N2 Teahaus
- 46 I5 Tennis Courts
- 47 O2 Titsworth
Miller Lecture Hall
- 48 J2 Tweed House
- 49 P3 Warren Green
- 50 M3 Westlands
Admission and Financial Aid
Dean of Studies and Student Life
- 51 N4 Westlands Gate

- OFF-CAMPUS**
Alumni Relations
45 Kraft Avenue, Bronxville
- Center for the Urban River at Beczak
35 Alexander Street, Yonkers
- Blue Light
Emergency Phones

- SARAH LAWRENCE COLLEGE**
1 MEAD WAY, BRONXVILLE NY 10708 | 914.337.0700 | SLC.EDU

PARKING LOTS:

- A H5 Andrews Parking: 968 Kimball Avenue
- B C7 Kober Parking: 12 Wilgarth Road
- P1 North Parking: 23 Mead Way
- B5 Wrexham Parking: 45 Wrexham Road
- E Mead Way Parking: 2 Mead Way (Visitor Parking)
- N4 Westlands Parking: 1 Mead Way
- K2 Lynd Parking: 947 Kimball Avenue
- H3 Marshall Field Parking: 35 Glen Washington Road
- O4 Swinford Parking: 4 Mead Way
- J3 Morrill Parking: 33 Glen Washington Road



51720129